

Supplementary Material for:

McIntyre, T. *Trends in the tagging of marine mammals: a review of marine mammal biologging studies.*

African Journal of Marine Science 2014: 1–14; doi: 10.2989/1814232X.2014.976655

Table S1: Summary list of numbers of papers reporting biologging data from various marine mammal species.

Redlist categories are as follows: LC = Least Concern, NT = Near Threatened, VU = Vulnerable, EN = Endangered, CR = Critically Endangered, DD = Data Deficient.

Species	Common name	Number of papers	Redlist category
Order Carnivora			
Family Otariidae			
<i>Arctocephalus pusillus doriferus</i>	Australian fur seal	7	LC
<i>Arctocephalus pusillus pusillus</i>	Cape fur seal	2	LC
<i>Arctocephalus forsteri</i>	New Zealand fur seal	11	LC
<i>Arctocephalus australis</i>	South American fur seal	1	LC
<i>Arctocephalus galapagoensis</i>	Galapagos fur seal	6	EN
<i>Arctocephalus gazella</i>	Antarctic fur seal	60	LC
<i>Arctocephalus tropicalis</i>	Subantarctic fur seal	11	LC
<i>Callorhinus ursinus</i>	Northern fur seal	21	VU
<i>Eumetopias jubatus</i>	Steller sea lion	17	NT
<i>Neophoca cinerea</i>	Australian sea lion	8	EN
<i>Otaria byronia</i>	South American sea lion	5	LC
<i>Phocarcos hookeri</i>	New Zealand sea lion	18	VU
<i>Zalophus californianus</i>	California sea lion	15	LC
<i>Zalophus wollebaeki</i>	Galapagos sea lion	8	EN
Family Odobenidae			
<i>Odobenus rosmarus</i>	Walrus	2	DD
<i>Odobenus rosmarus divergens</i>	Pacific walrus	2	DD
<i>Odobenus rosmarus divergens</i>	Atlantic walrus	3	DD
Family Phocidae			
<i>Cystophora cristata</i>	Hooded seal	9	VU
<i>Erignathus barbatus</i>	Bearded seal	9	LC
<i>Halichoerus grypus</i>	Gray seal	38	LC
<i>Hydrurga leptonyx</i>	Leopard seal	4	LC
<i>Leptonychotes weddellii</i>	Weddell seal	55	LC
<i>Lobodon carcinophagus</i>	Crabeater seal	9	LC
<i>Mirounga angustirostris</i>	Northern elephant seal	53	LC
<i>Mirounga leonina</i>	Southern elephant seal	90	LC
<i>Monachus monachus</i>	Mediterranean monk seal	2	CR
<i>Monachus schauinslandi</i>	Hawaiian monk seal	3	CR
<i>Ommatophoca rossii</i>	Ross seal	3	LC
<i>Pagophilus groenlandicus</i>	Harp seal	6	LC
<i>Phoca largha</i>	Spotted seal	4	DD

<i>Phoca vitulina</i>	Harbor seal	47	LC
<i>Pusa hispida</i>	Ringed seal	17	LC
<i>Pusa sibirica</i>	Baikal seal	6	LC
Family Ursidae			
<i>Ursus maritimus</i>	Polar bear	13	VU
Family Mustelidae			
<i>Enhydra lutris</i>	Sea otter	5	EN
Order Cetartiodactyla			
Suborder Mysticeti			
Family Balaenidae			
<i>Balaena mysticetus</i>	Bowhead whale	9	LC
<i>Eubalaena australis</i>	Southern right whale	1	LC
<i>Eubalaena glacialis</i>	North Atlantic right whale	4	EN
Family Eschrichtiidae			
<i>Eschrichtius robustus</i>	Gray whale	2	LC
Family Balaenopteridae			
<i>Balaenoptera borealis</i>	Sei whale	1	EN
<i>Balaenoptera edeni</i>	Bryde's whale	2	DD
<i>Balaenoptera musculus</i>	Blue whale	11	EN
<i>Balaenoptera physalus</i>	Fin whale	10	EN
<i>Megaptera novaeangliae</i>	Humpback whale	11	LC
Suborder Odontoceti			
Family Physeteridae			
<i>Physeter macrocephalus</i>	Sperm whale	13	VU
Family Ziphiidae			
<i>Berardius bairdii</i>	Baird's beaked whale	1	DD
<i>Hyperoodon ampullatus</i>	Northern bottlenose whale	3	DD
<i>Mesoplodon densirostris</i>	Blainville's beaked whale	7	DD
<i>Ziphius cavirostris</i>	Cuvier's beaked whale	6	LC
Family Monodontidae			
<i>Delphinapterus leucas</i>	Beluga	13	NT
<i>Monodon monoceros</i>	Narwhal	15	NT
Family Delphinidae			
<i>Cephalorhynchus heavisidii</i>	Heaviside's dolphin	1	DD
<i>Delphinus delphis</i>	Common dolphin	2	DD
<i>Feresa attenuata</i>	Pygmy killer whale	1	DD
<i>Globicephala macrorhynchus</i>	Short-finned pilot whale	6	DD
<i>Globicephala melas</i>	Long-finned pilot whale	3	DD
<i>Lagenorhynchus acutus</i>	Atlantic white-sided dolphin	2	LC

<i>Lagenorhynchus albirostris</i>	White-beaked dolphin	1	
<i>Orcinus orca</i>	Killer whale	6	DD
<i>Peponocephala electra</i>	Melon-headed whale	1	LC
<i>Pseudorca crassidens</i>	False killer whale	1	DD
<i>Stenella attenuata</i>	Pantropical spotted dolphin	2	LC
<i>Tursiops truncatus</i>	Common bottlenose dolphin	6	LC

Family Phocoenidae

<i>Neophocaena phocaenoides</i>	Indo-Pacific finless porpoise	4	VU
<i>Phocoena phocoena</i>	Harbor porpoise	4	LC
<i>Phocoenoides dalli</i>	Dall's porpoise	1	LC

Order Sirenia

Family Trichechidae

<i>Trichechus manatus latirostris</i>	Florida manatee	2	VU
---------------------------------------	-----------------	---	----

Family Dugongidae

<i>Dugong dugon</i>	Dugong	6	VU
---------------------	--------	---	----

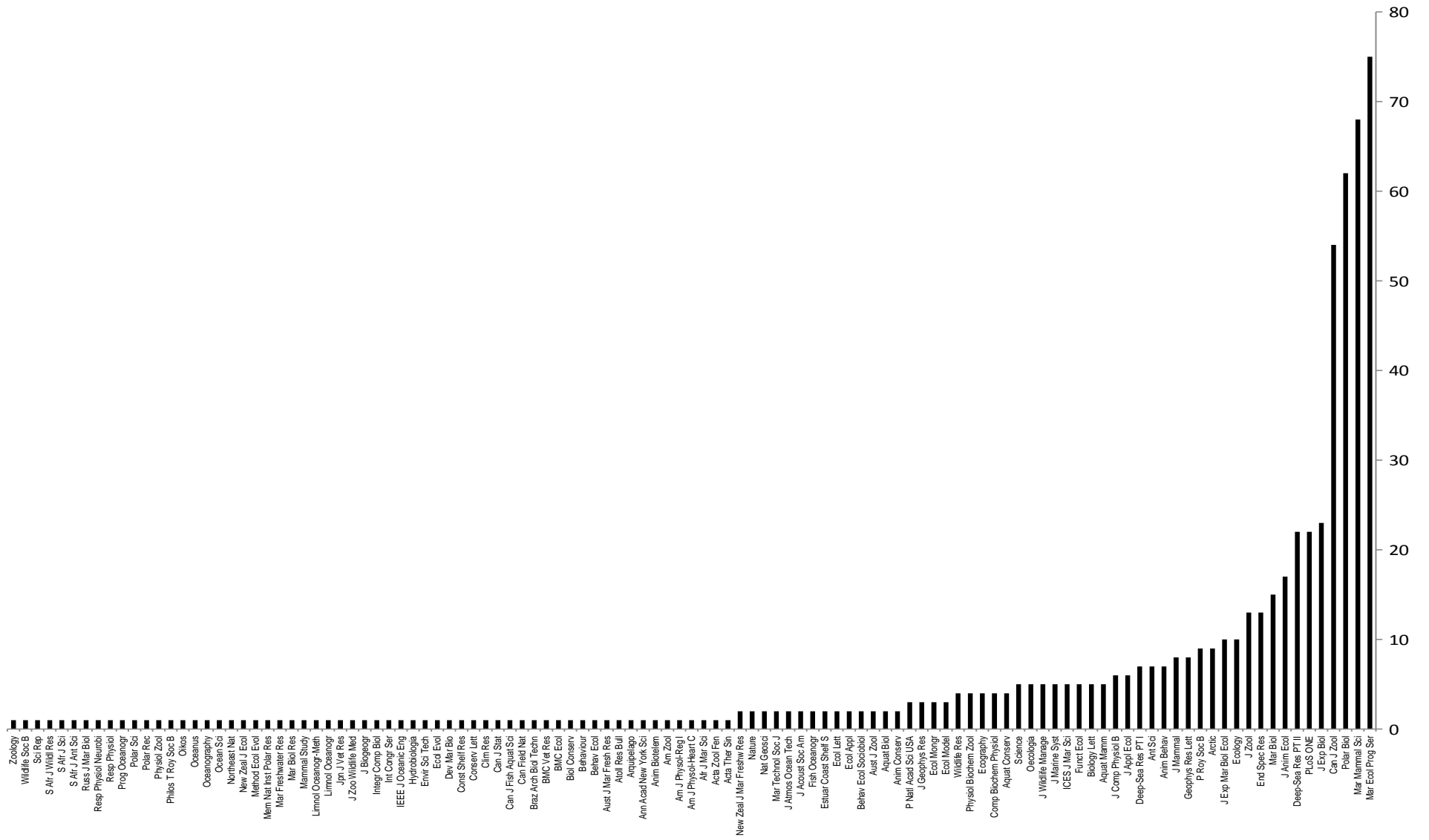


Figure S1: Numbers of papers from biologging deployments on marine mammals by journal name.

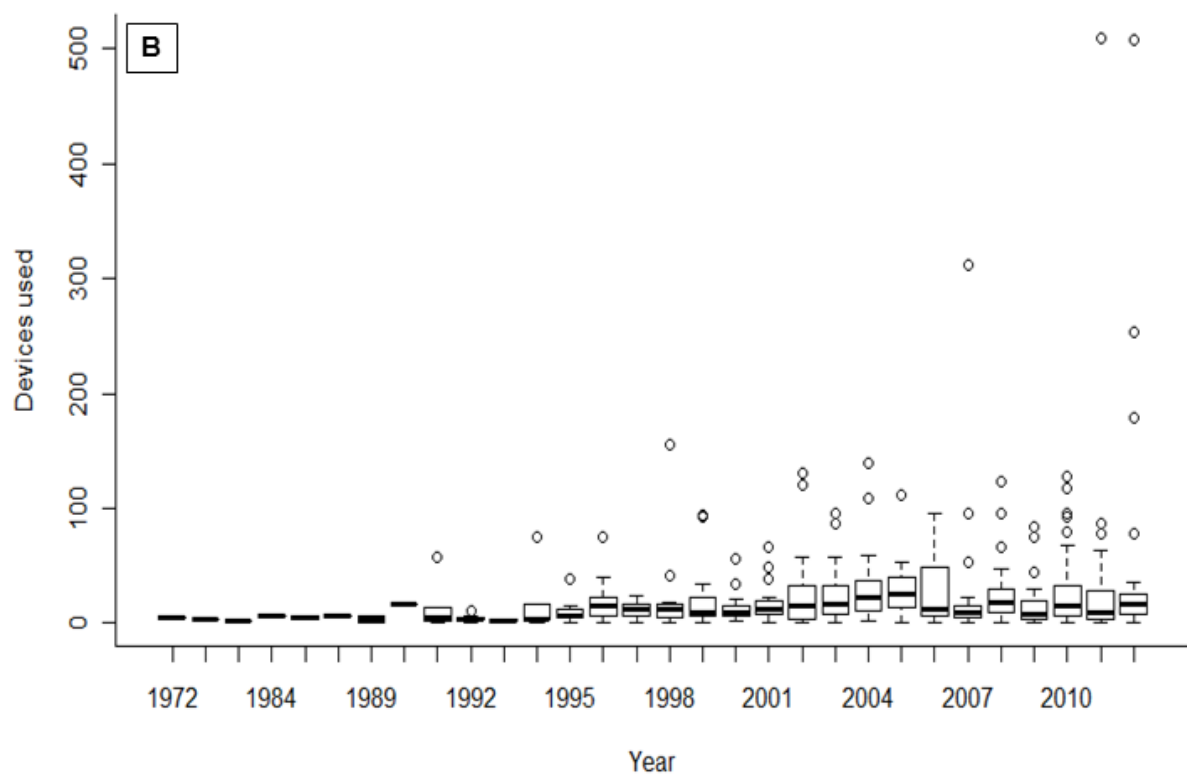
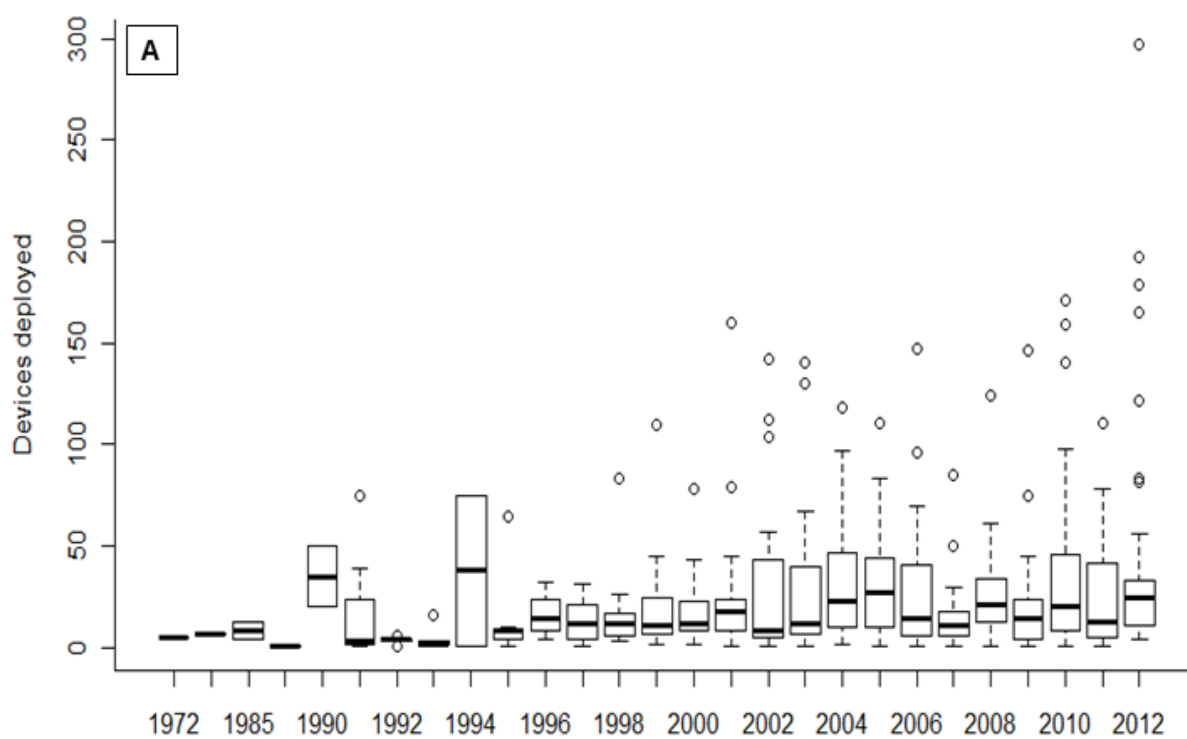


Figure S2: Trends in reported numbers of (A) instruments deployed and (B) instruments deployed that resulted in useful data for analyses.